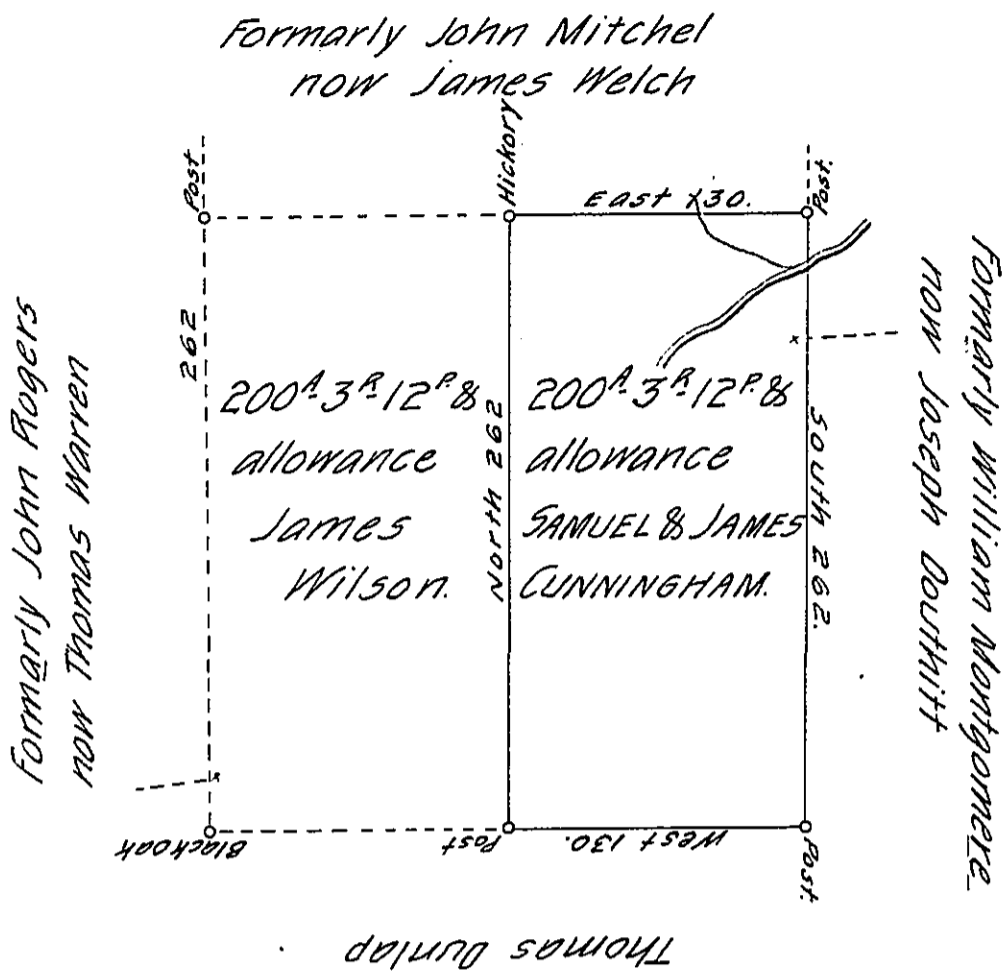


(Don't use)



The above black lined Draught represents the Eastern half of a Certain 400 acre Tract of Land Situated on the North Side of the Ohio River in the Township of Chipawa, in Beaver County and Contains two hundred Acres, three quarters, twelve perches and allowance of six per Cent. Surveyed for Samuel & James Cunningham on their Settlement January 17th 1828.

And from the best information we can gather it is a part of the 400 acre Tract Warrented in the name of John Montgomere whos- Warrent was dated the 14th April 1792, and Survey made December 7th 1794.

The owners and occupiers are as the- are incerted in the Drafts.

Henry Davis, D.S.

Gabriel Hiester, Esq^r }
Surveyor General.

IN TESTIMONY that the above is a copy of the original remaining on file in the Department of Internal Affairs of Pennsylvania, made conformably to an Act of Assembly approved the 16th day of February, 1833, I have hereunto set my Hand and caused the Seal of said Department to be affixed at Harrisburg, this first day of March 1906.

Isaac P. Brown
Secretary of Internal Affairs.